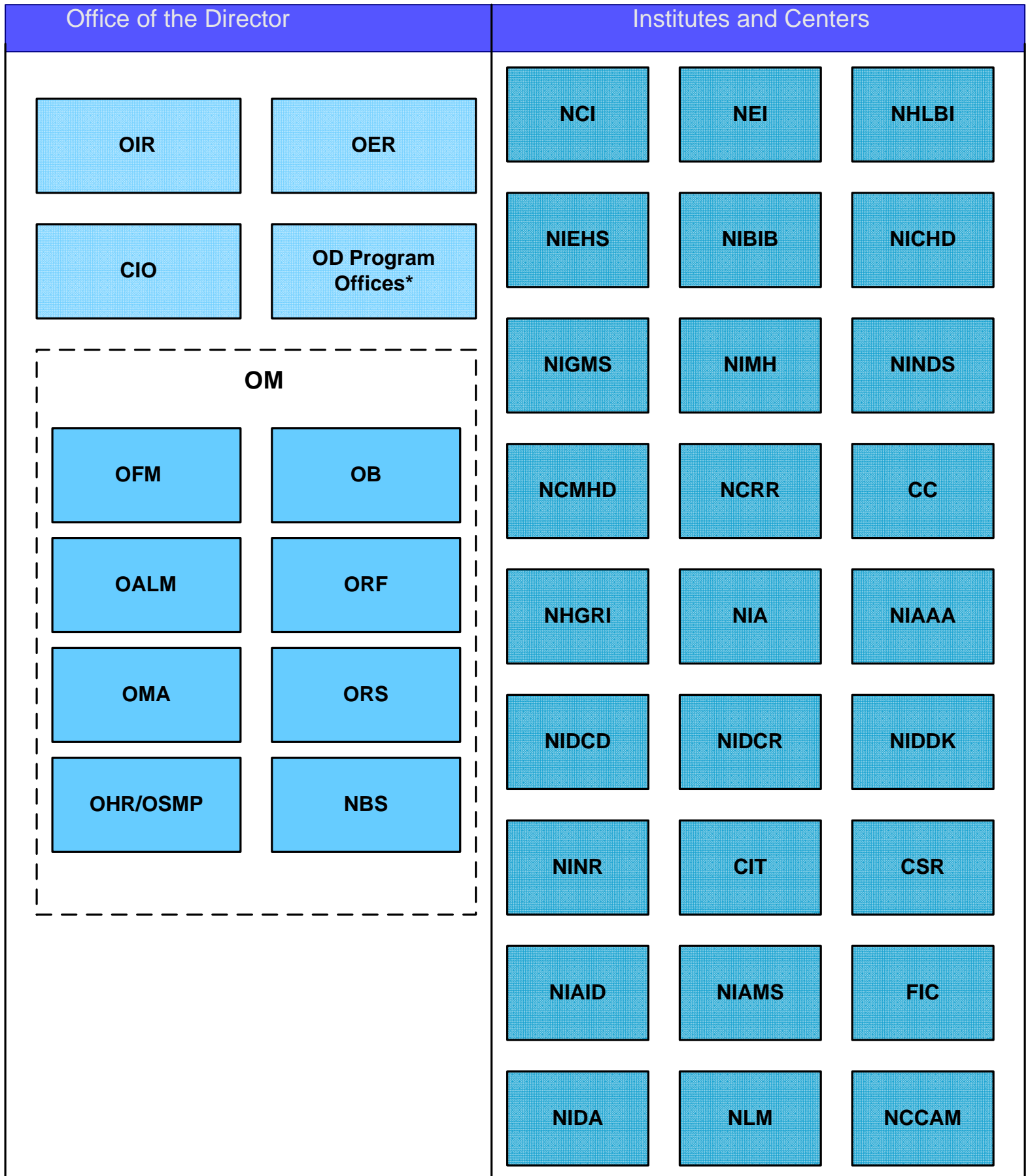


The NIH Risk Management Organizational Framework

At NIH, each of the 27 IC's is an AU. The OD is divided into an additional 12 Aus based on strategic groupings of certain offices. With the IC's and OD Offices combined, there are a total of 39 AU's at NIH. These AU's are displayed in the graphic below.



*OD Program Offices include: ORWH, OFACP, OEODM, CCR, OLPA, OCPL, OSP, OPASI, NEO, ODP, OBSSR, & OAR.